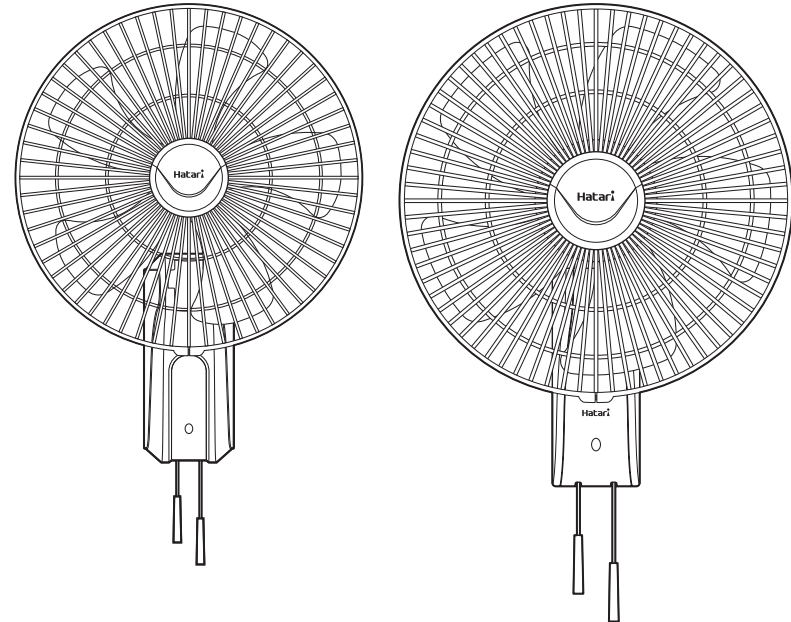


User Manual

Industrial Fan



PRODUCT SPECIFICATIONS

Model	IW18M1	IW22M1
Size	450 mm	550 mm
Voltage	220-240V 50/60Hz	220-240V 50/60Hz
Electric Power	125-162W	197-264W
Electric Current	0.63-0.68A	0.93-1.14A
Service Value	1.10 m ³ /min/W	0.92 m ³ /min/W

Thank you for choosing to buy a Hatari appliance.
 To ensure safety and optimal usage, please read the instructions carefully before using. Retain this manual for future reference.



Hatari Electric Co., Ltd.
 10 Rama 2, Soi 94, Samaedam, Bangkhunthian, Bangkok 10150, Thailand
 Tel : +66 2 896 2400
 Fax : +66 2 896 2416
 Email : services@hatari.co.th



www.hatari.co.th

CAUTION

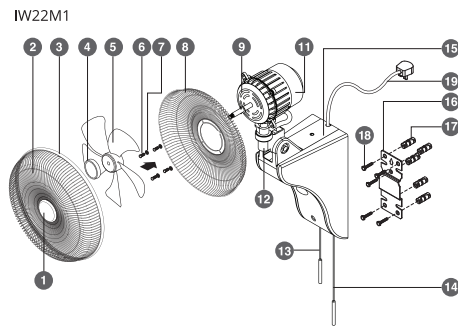
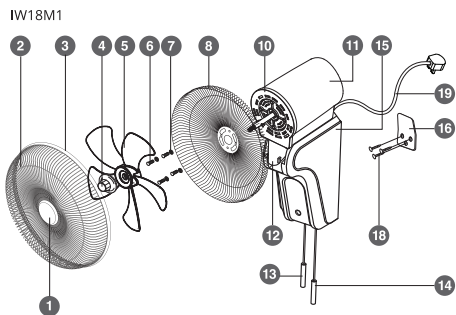
1. Unplug the fan before cleaning or changing fan components, and when not in use for a long period of time.
2. Do not use the fan if not all components are assembled or if components such as blade cap, blade or grille are found to be defective.
3. The appliance is not to be used by persons (including children) with reduced physical, sensory or mental capabilities, or lack of experience and knowledge, unless they have been given supervision or instruction.
4. This appliance can be used by children aged from 8 years and above and persons with reduced physical, sensory or mental capabilities or lack of experience and knowledge if they have been given supervision or instruction concerning use of the appliance in a safe way and understand the hazards involved.
5. Children shall not play with the appliance.
6. Cleaning and user maintenance shall not be made by children without supervision.

USAGE RECOMMENDATIONS

1. The fan components should be assembled correctly according to the manual to prevent possible harm that may occur while in use.
The fan should not be placed or installed in areas that are of extreme temperatures or near stoves, or in areas that are wet with high humidity, or has hydrocarbon vapors such as petroleum.
2. The fan should not be operated near curtains or mosquito nets because the fan may suck in the light material and entangle them with the blades, possibly causing harm.
3. Do not spray all types of spray into the fan; for example, hairspray or cleaning spray.
Do not insert fingers, pencils or other objects into the grille while the blades are spinning as it may result in possible injury or physical damage.
If a component such as blade, grille, blade cap, or the rear grille lock is damaged, replacement can be made using a new component.
4. Please refer to the assembly instructions.
If an electrical component such as power cord, motor, or switch is damaged, it must be replaced by the manufacturer, its service agent or a qualified person in order to avoid hazards. It is not advisable to fix the fan at home.

FAN COMPONENTS

- | | | | |
|-----------------|-----------------------|-----------------------------|-----------------------------|
| 1. DECO | 6. REAR GRILLE SCREW | 11. REAR MOTOR COVER | 16. WALL BRACKET |
| 2. FRONT GRILLE | 7. SPRING WASHER | 12. NECK JOINT SET | 17. DOUBLE EXPANSION ANCHOR |
| 3. GRILLE RING | 8. REAR GRILLE | 13. OSCILLATION PULL STRING | 18. HEX HEAD UNIFIED SCREW |
| 4. BLADE CAP | 9. MOTOR | 14. FAN SPEED PULL STRING | 19. POWER SUPPLY CORD |
| 5. FAN BLADE | 10. FRONT MOTOR COVER | 15. FAN BASE | |

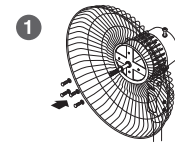


DIRECTION OF USE

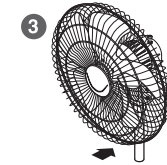
Plug power supply cord into a 220-240V, 50/60Hz power socket.

1. Fan Speed Adjustment Pull the fan speed pull string for 3 adjustable fan speed settings 0: off, 1: low speed, 2: medium speed, 3: high speed, respectively.
2. Swing Adjustment Pull the oscillation pull string down to activate left-right movements. Pull the oscillation pull string again to cease movement.
3. Fan Angle Adjustment Tilt the grille upwards or downwards according to the desired wind direction.

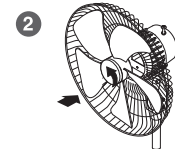
ASSEMBLY INSTRUCTIONS



Remove the rear grille screws (6) from the 4 indicated positions with arrows. Insert the rear grille and tightly attach the screws (6) and spring washers (7) (Spring washers for model: IW22M1) to the front motor cover according to the 4 indicated positions.



Place the front grille onto the fan with the lock on the edge of the grille interlocking with the top part of the rear grille. Use your hands to press the grille ring in all directions, then tighten the screw on the grille ring using a screwdriver.



Place the blade onto the motor shaft, ensuring that grooves of the blade fit with the catch, then place the blade cap over the blade, tightening it by twisting it in the direction as shown by the arrow (TIGHTEN).

Plug in the fan and press the fan speed button 1, 2, 3 respectively. If the fan makes a loud noise, check if the blade cap is fitted tightly and whether the grooves on the blade fits the corresponding catches of the motor shaft.

INSTALLATION

The fan should be installed with the blade positioned at least 2.3 meters above ground level.

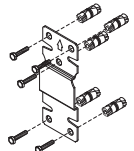
1. Model: IW18M1

Secure the wall bracket firmly to the wall with screws.

- The wall thickness should be no less than 1.3 cm
- Spacing from the adjacent wall should be no less than 38 cm
- Spacing from the ceiling should be no less than 50 cm

2. Model: IW22M1

Drill the wall and embed the double expansion anchors (17). Secure the wall bracket (16) with the arrow facing up (as shown by the diagram) using the Hex Head Unified screws (18) by putting them through the wall bracket and fastening the screws to the double expansion anchors (17). Tighten the 5 screws.



- The wall thickness should be no less than 1.3 cm
- The wall should be able to withstand at least 25 kg of weight
- Spacing from the adjacent wall should be no less than 45 cm
- Spacing from the ceiling should be no less than 60 cm

CARE AND CLEANING INSTRUCTIONS

1. Use a damp cloth to wipe stains, and then dry the area by wiping.
2. When cleaning fan, be careful not to let the wire, switch, motor and other electrical components get wet.
3. Do not use chemical products, thinner solvents, alcohol, kerosene or petrol to clean the fan.