

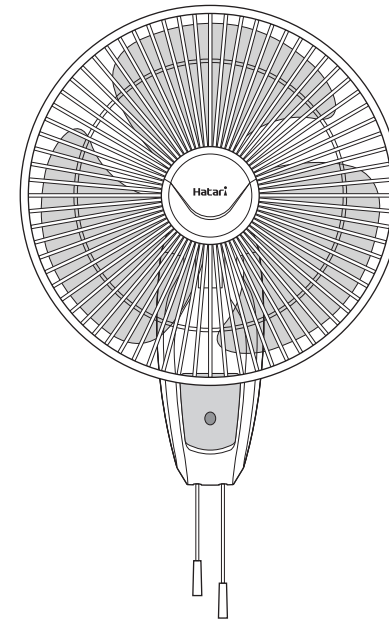
Item code: 1002349 REV.02

**Hatari**

Model: HT-W16M6

# User Manual

## Wall Fan



### PRODUCT SPECIFICATIONS

Model	HT-W16M6
Size	400 mm
Voltage	220-240V 50/60Hz
Electric Power	54W
Electric Current	0.24A
Service Value	1.30 m <sup>3</sup> /min/W

**Hatari**

Hatari Electric Co., Ltd.  
10 Rama 2, Soi 94, Samaedam, Bangkhunthian, Bangkok 10150, Thailand  
Tel : +66 2 896 2400  
Fax : +66 2 896 2416  
Email : services@hatari.co.th



www.hatari.co.th

**Thank you for choosing to buy a Hatari appliance.**

To ensure safety and optimal usage, please read the instructions carefully before using. Retain this manual for future reference.

## CAUTION

1. Unplug the power supply cord before cleaning or changing the components, and when not in use for a long period of time.
2. Do not use the fan if components are not assembled fully or properly, or if a component such as blade, grille, or blade cap is damaged.
3. The appliance is not to be used by persons (including children) with reduced physical, sensory or mental capabilities, or lack of experience and knowledge, unless they have been given supervision or instruction.
4. This appliance can be used by children aged from 8 years and above and persons with reduced physical, sensory or mental capabilities or lack of experience and knowledge if they have been given supervision or instruction concerning use of the appliance in a safe way and understand the hazards involved.
5. Children shall not play with the appliance.
6. Cleaning and user maintenance shall not be made by children without supervision.

## USAGE RECOMMENDATIONS

1. The fan components should be assembled correctly according to the manual to prevent possible harm that may occur while in use.
2. The fan should not be placed or installed in areas that are of extreme temperatures or near stoves, or in areas that are wet with high humidity, or has hydrocarbon vapors such as petroleum.
3. The fan should not be operated near curtains or mosquito nets because the fan may suck in the light material and entangle them with the blades, possibly causing harm.
4. Do not spray all types of spray into the fan; for example, hairspray or cleaning spray.
5. Do not insert fingers, pencils or other objects into the grille while the blades are spinning as it may result in possible injury or physical damage.
6. If a component such as blade, grille, blade cap, or the back grille lock is damaged, replacement can be made using a new component. Please refer to the assembly instructions.
7. If an electrical component such as supply cord, motor, or switch is damaged, it must be replaced by the manufacturer, its service agent or similarly qualified persons in order to avoid a hazard. It is not advisable to fix the fan at home.

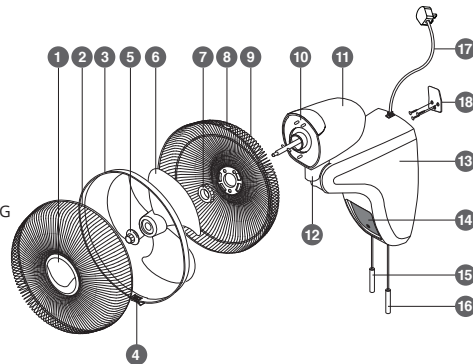
## DIRECTION OF USE

Plug power supply cord into a 220-240V, 50/60Hz power socket.

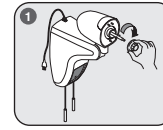
1. Fan speed adjustment Pull the fan speed pull string for 3 adjustable fan speed settings 0: off, 1: low speed, 2: medium speed, 3: high speed, respectively.
2. Swing adjustment Pull the oscillation pull string down to activate left-right movements. Pull the oscillation pull string again to cease movement.
3. Fan angle adjustment Tilt the grille upwards or downwards according to the desired wind direction.

## FAN COMPONENTS

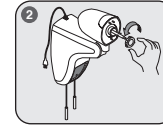
- |                          |                              |
|--------------------------|------------------------------|
| 1. DECO                  | 11. BACK MOTOR COVER         |
| 2. FRONT GRILLE          | 12. NECK JOINT SET           |
| 3. GRILLE RING           | 13. FAN BASE                 |
| 4. GRILLE CLIP           | 14. SWITCH COVER             |
| 5. BLADE CAP             | 15. OSCILLATION PULL STRING  |
| 6. FAN BLADE             | 16. FAN SPEED PULL STRING    |
| 7. BACK GRILLE LOCK      | 17. POWER SUPPLY CORD & PLUG |
| 8. BACK GRILLE CLIP LOCK | 18. WALL BRACKET             |
| 9. BACK GRILLE           |                              |
| 10. FRONT MOTOR COVER    |                              |



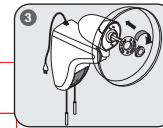
## ASSEMBLY INSTRUCTIONS



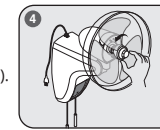
Loosen the blade cap by twisting it in the direction as shown by the arrow (LOOSEN).



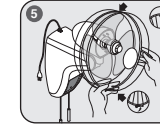
Loosen the back grille lock by twisting it in the direction as shown by the arrow (LOOSEN).



Assemble the back grille as shown in the diagram. Place the back grille lock over the grille and tighten it by twisting in the direction as shown by the arrow (TIGHTEN).



Place the blade onto the motor shaft, ensuring that grooves of the blade fit with the motor shaft pin. Place the blade cap over the blade and tighten it by twisting in the direction as shown by the arrow (TIGHTEN).

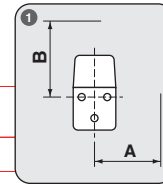


Assemble the front grille with the catch on the grille ring interlocking with the back grille clip lock. Press the grille ring in all directions then push the grille clip up.

Plug in the fan and pull the fan speed switches 1, 2, 3 respectively. If the fan makes a loud noise, check if the blade cap is screwed on tightly and whether the grooves of the blade fit the corresponding motor shaft pin.

## INSTALLATION

The fan should be installed with the blade positioned at least 2.3 meters above ground level.



Secure the wall bracket firmly to the wall with screws.

- The wall thickness should be no less than 1.3 cm
- Spacing from the adjacent wall (A) should be no less than 38 cm
- Spacing from the ceiling (B) should be no less than 50 cm as shown by the arrow (TIGHTEN).



Lift the fan and hang it on the wall bracket, making sure that the grooves behind the fan base (Arrow) are securely locked into place. Position the fan so that it is perpendicular to the ground.

## CARE AND CLEANING INSTRUCTIONS

1. Use a damp cloth to wipe stains, and then dry the area by wiping.
2. When cleaning the fan, be careful not to let the wire, switch, motor and other electrical components get wet.
3. Do not use chemical products, thinner solvents, alcohol, kerosene or petrol to clean the fan.